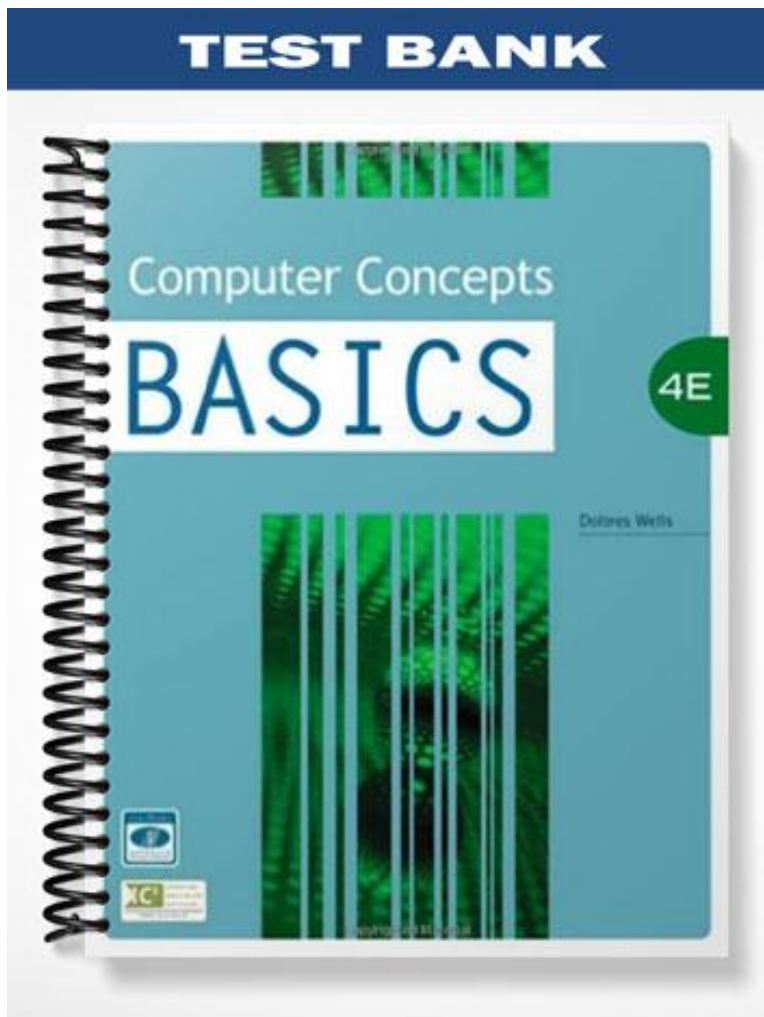


**TEST BANK**



Computer Concepts

**BASICS**

4E

Dolores Wells



## Lesson 2: The Internet and the World Wide Web

---

### TRUE/FALSE

1. The “information superhighway” refers to the Internet.

ANS: T                      PTS: 1                      REF: 21

2. Computers on the Internet communicate with each other using a set of protocols known as TCP/IP or Transmission Control Protocol and Internet Protocol.

ANS: T                      PTS: 1                      REF: 23

3. The first part of a URL address indicates the IP address or the domain name where the resource is located.

ANS: F                      PTS: 1                      REF: 26

4. If you connect to the Internet through an organization such as a school or business, you probably are connecting through a wide area network.

ANS: F                      PTS: 1                      REF: 27

5. In Internet Explorer, the title bar is at the top of the window and contains the name of the document.

ANS: T                      PTS: 1                      REF: 29

6. The Command bar is located on the right side of the window below the menu bar.

ANS: T                      PTS: 1                      REF: 31

7. AddressComplete keeps track of and saves previous entries you have made for Web addresses, forms, and passwords

ANS: F                      PTS: 1                      REF: 32

8. If you find a site that you want to return to often, then you would add it to your Favorites list.

ANS: T                      PTS: 1                      REF: 38

9. When you explore the Web, the pages are stored in temporary folders on your hard drive in your disk cache.

ANS: T                      PTS: 1                      REF: 40

10. One way to identify a secure site is to check the status bar at the bottom of your Web browser. There you will see a small icon—usually a key.

ANS: F                      PTS: 1                      REF: 40

### MULTIPLE CHOICE

1. The origins of the Internet can be traced to the \_\_\_\_ and the United States Department of Defense.
- a. 1950s
  - b. 1960s
  - c. 1970s
  - d. 1980s

ANS: B                      PTS: 1                      REF: 22

2. A \_\_\_\_ is any computer directly connected to the network.
- a. host node
  - b. server node
  - c. host hub
  - d. server hub

ANS: A                      PTS: 1                      REF: 22

3. A \_\_\_\_ computer is a computer that you access remotely from your computer.
- a. host
  - b. wireless
  - c. client
  - d. Web 2.0

ANS: A                      PTS: 1                      REF: 23

4. The \_\_\_\_ identifies a site on the Internet.
- a. server name
  - b. domain name
  - c. Web page name
  - d. FTP name

ANS: B                      PTS: 1                      REF: 24

5. \_\_\_\_ is the protocol or standard that defines how pages are transmitted on the Web.
- a. HTML
  - b. URL
  - c. TCP/IP
  - d. HTTP

ANS: D                      PTS: 1                      REF: 24

6. The top-level domain abbreviation org refers to \_\_\_\_.
- a. associations and organizations
  - b. educational institutions
  - c. network providers
  - d. commercial businesses

ANS: A                      PTS: 1                      REF: 26

7. When on a LAN network, you connect to the Internet using a \_\_\_\_\_. This is a special card inside your computer that allows the computer to be networked.
- a. NEC
  - b. NC
  - c. NTC
  - d. NIC

ANS: D                      PTS: 1                      REF: 27

8. The first step in connecting to the Internet is to locate any of the following EXCEPT \_\_\_\_.
- a. Internet service provider (ISP)
  - b. Web service provider (WSP)
  - c. online service provider (OSP)
  - d. wireless Internet service provider (WISP)

ANS: B                      PTS: 1                      REF: 28

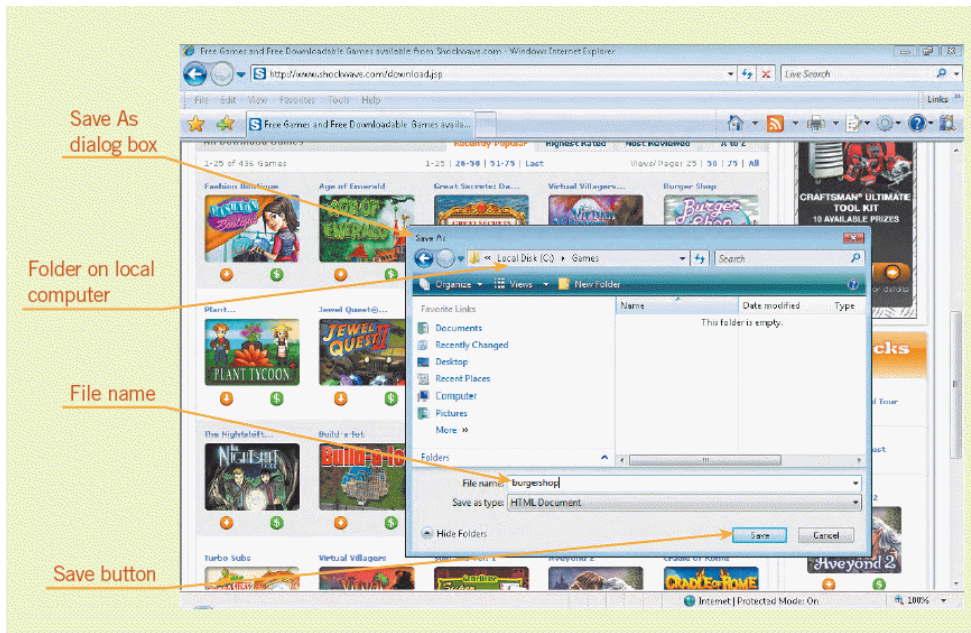
9. In Internet Explorer, the \_\_\_\_ displays the active Web page.
- a. Web viewer
  - b. document window
  - c. Web window
  - d. document viewer

ANS: B                      PTS: 1                      REF: 29

10. In Internet Explorer, the \_\_\_\_ bar is where you enter the address or URL of the Web site you want to visit.
- a. title
  - b. address
  - c. menu
  - d. status
- ANS: B                      PTS: 1                      REF: 29
11. The commands Cut, Copy, Paste, Select All, and Find on this Page are part of the \_\_\_\_ menu on the Menu bar.
- a. View
  - b. Edit
  - c. Tools
  - d. Favorites
- ANS: B                      PTS: 1                      REF: 32
12. The \_\_\_\_ button on the Command bar displays a menu of commands.
- a. Tools
  - b. help
  - c. Page
  - d. Feeds
- ANS: A                      PTS: 1                      REF: 32
13. To change the default home page you use the \_\_\_\_ dialog box.
- a. Phishing Filter
  - b. Organize Favorites
  - c. Manager Add-ons
  - d. Internet Options
- ANS: D                      PTS: 1                      REF: 35
14. In Internet Explorer, the browser keeps track of your browsing history for a default number of days which is \_\_\_\_.
- a. 10
  - b. 15
  - c. 20
  - d. 25
- ANS: C                      PTS: 1                      REF: 37
15. To clear the History list, click Tools on the Command bar, and then click Internet Options to display the Internet Options dialog box. Click the \_\_\_\_ tab and then click the Delete button in the Browsing history section.
- a. General
  - b. History
  - c. Options
  - d. Advanced
- ANS: A                      PTS: 1                      REF: 38
16. In Internet Explorer, the \_\_\_\_ provides some control over what content can be viewed on the Internet.
- a. Content Advisor
  - b. Internet Advisor
  - c. Content Cop
  - d. Internet Cop
- ANS: A                      PTS: 1                      REF: 39

Please refer to the figure below as you answer the following two questions.

FIGURE 2-1



17. Referring to Figure 2-1, to save a downloaded file to your computer you open the \_\_\_\_ dialog box.
- Save As
  - Save
  - Download
  - Programs

ANS: A                      PTS: 1                      REF: 44

18. Referring to Figure 2-1, your downloaded file will download to \_\_\_\_.
- the folder you choose
  - always the desktop
  - always My Documents
  - to My Favorites

ANS: A                      PTS: 1                      REF: 44

19. A \_\_\_\_ is a discussion forum or a type of bulletin board.
- newsgroup
  - chatgroup
  - bloggroup
  - Webgroup

ANS: A                      PTS: 1                      REF: 46

20. \_\_\_\_ uses a high-speed Internet connection instead of a regular (analog) telephone line.
- VoIP
  - VoP
  - ViP
  - VoPi

ANS: A                      PTS: 1                      REF: 46

## CASE 2.1

Mark is in charge of the IT department of a small manufacturing company. The President of the company has asked Mark to “show him the basics.” Mark starts with a lesson regarding TCP/IP. Please answer the questions below.

21. Computers communicate with each other using TCP/IP. Mark explains that the IP protocol \_\_\_\_.
- works using FTP
  - works with the addressing scheme
  - establishes the connection between computers
  - works using VoIP

ANS: B                    PTS: 1                    REF: 23                    TOP: Critical Thinking

22. Mark then explains that the TCP protocol \_\_\_\_.
- a. using FTP
  - b. with the addressing scheme
  - c. establishes the connection between computers
  - d. using VoIP

ANS: C                    PTS: 1                    REF: 23                    TOP: Critical Thinking

### CASE 2.2

Madeline was teaching a group of senior citizens how to use the Internet to stay in touch with their families. She starts with a simple lesson about how computers communicate. Please answer the questions below.

23. Madeline first shows her class a URL and explains that this is the Web page's \_\_\_\_.
- a. unique address
  - b. routing number
  - c. common address
  - d. top level domain name

ANS: A                    PTS: 1                    REF: 26                    TOP: Critical Thinking

24. Madeline then explains that behind every Web page there is a protocol that controls how the World Wide Web works. This protocol is \_\_\_\_.
- a. .NET
  - b. HTML
  - c. HTTP
  - d. JAVA

ANS: B                    PTS: 1                    REF: 27                    TOP: Critical Thinking

### COMPLETION

1. A \_\_\_\_\_ is a software program that provides a graphical interface for the Internet.

ANS: browser

PTS: 1                    REF: 22

2. Web 2.0 is also called the \_\_\_\_\_ Web, and refers to Web sites where users can modify the content.

ANS: participatory

PTS: 1                    REF: 25

3. \_\_\_\_\_ is a new browser feature. When you start the browser, the page you have designated as the home page opens in the first tab.

ANS: Tabbed browsing

PTS: 1                    REF: 28

4. In Internet Explorer, the \_\_\_\_\_ page is the first page that is displayed when you start your browser.

ANS: home

PTS: 1 REF: 35

5. Internet Explorer has a special feature called \_\_\_\_\_ that makes it easy for you to locate your desired information quickly. You type a common term in the Address bar and press the Enter key.

ANS: AutoSearch

PTS: 1 REF: 36

### MODIFIED TRUE/FALSE

1. A markup language is a standard format for transferring data between two devices.  
\_\_\_\_\_

ANS: F, protocol

PTS: 1 REF: 23

2. A Web server is a computer that delivers, or serves up, Web pages. \_\_\_\_\_

ANS: T PTS: 1 REF: 25

3. Hypertext is a text-based link to other text-based documents and often referred to as a link, which is short for Weblink. \_\_\_\_\_

ANS: F, hyperlink

PTS: 1 REF: 27

4. In the Internet Explorer window, the Refresh Tabs button locates a previous site or closes sites.  
\_\_\_\_\_

ANS: F, Quick

PTS: 1 REF: 29

5. In Internet Explorer, if you want to return to a Web page you found last week, and you cannot remember the URL, then you can use the History button to locate the site.  
\_\_\_\_\_

ANS: T PTS: 1 REF: 37

### MATCHING

Please identify the letter of the choice that best matches the numbered definitions below.

- a. Address bar
- b. link
- c. Web 2.0

- d. Web server
- e. Web page

1. Ordinary text page that is coded with HTML markup tags and then displayed within a browser
2. Where you enter the address or URL of the Web site you want to visit
3. Also called the participatory Web
4. Hypertext is a text-based link to other text-based documents and often referred to as a \_\_\_\_
5. A computer that delivers, or serves up, Web pages

- |           |        |         |
|-----------|--------|---------|
| 1. ANS: E | PTS: 1 | REF: 27 |
| 2. ANS: A | PTS: 1 | REF: 30 |
| 3. ANS: C | PTS: 1 | REF: 25 |
| 4. ANS: B | PTS: 1 | REF: 27 |
| 5. ANS: D | PTS: 1 | REF: 25 |

## ESSAY

1. Please define the following “bars” found in Internet Explorer: Address bar, Command bar, Menu bar, Scroll bar, Status bar, and Title bar.

ANS:

Address bar: Contains the URL or address of the active Web page; also, where you type the location for the Web page you want to visit.

Command bar: A horizontal toolbar located on the right side of the window; provides a selection of options used to execute common commands.

Menu bar: Lists menu commands if you select the option to display the menu bar.

Scroll bar: Lets you scroll vertically or horizontally if the Web page is too long or too wide to fit within one screen.

Status bar: Located at the bottom of the browser; shows the progress of Web page transactions.

Title bar: The bar on top of the window that contains the name of the document.

PTS: 1

REF: 29

TOP: Critical Thinking